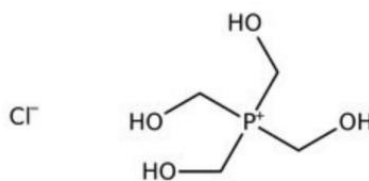


Tetrakis-Hydroxymethyl Phosphonium Chloride (THPC)



CAS No.	124-64-1	EINECS No.	204-707-7
Molecular Formula	(CH ₂ OH) ₄ PCl	Molecular Weight	190.50

Structural Formula



Product Features

THPC has its characteristic odor. Non-flammable. Has mild acid properties and are considered corrosive. Easily biodegradable and considered environmentally friendly compound.

Technical Specification

Parameter	Standard
Appearance	Colorless or straw yellow liquid
Active matter, %	80.0-82.0
Active P, %	13.0-13.4
pH value	3.0-5.0
Density (20°C), g/cm ³	1.32min
Viscosity(25°C), cps	50.0 max

Applications & Usage

THPC is used in the flame-resistant fabric industry to improve the tear strength of cotton and other cellulosic fabrics.

THPC can be also used as tanning agents in the leather industry. Compared with untreated fabrics, treated textiles show excellent flame-retarding, handling, wash resistance, and low tear strength effects.



THPC is an anti-microbial agent against SRB (Sulfate Reducing Bacteria) with minimum effects on the environment used in oilfield drilling and production applications. THPC can be also used as an iron control chemistry to prevent iron sulfide scale common in the oil and gas industry.

THPC can be used for the control of bacteria, algae, and fungi in industrial/commercial recirculating cooling water systems, in heat transfer water systems, and in industrial process water systems in Industrial and Commercial Water Treatment.

Package & Storage

25L Drum	200L Drum	1000L IBC	ISO Tank
			
Storage for 12 months in shady room and dry place.			

Hazard & Safety Precaution

Hazard Information	Safety Precaution
 Corrosive, Class 8+6.1, UN 2922	
Once contacted with eye and skin, flush with plenty of clean water.	

Alternative Name / Synonyms

- tetramethylolphosphonium chloride,
- tetrahydroxymethylphosphonium chloride,
- THPC, Pyroset TKC, Proban CC, Retardol C, NCI-C55061, Tolcide THPC Cloruro de tetraquis (hidroximetil) fosfonio;
- Oil Field Drilling